



Recent achievements

Studying the accuracy of modelled changes in freshwater provision over time

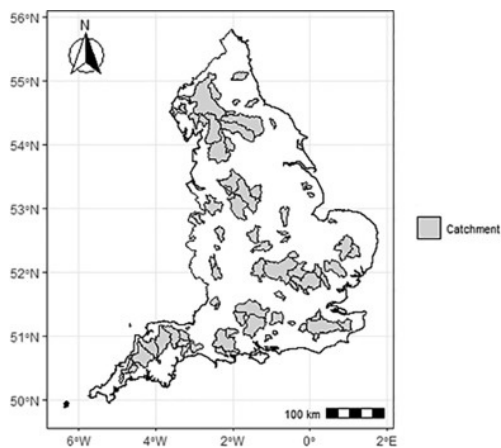


Photo: Locations of the 81 catchments (grey) across England modelled in this study.

A new BESTMAP-funded research [paper](#) has been recently published in the [Science of The Total Environment](#) journal. The study investigates the accuracy of modelled changes in freshwater provision over time. The authors have modelled annual water yield in two time periods across 81 catchments in England and validated against empirical data.

[Read more](#)

Typologies for European farmers

A research [article](#), recently developed by the BESTMAP team has been published in [Regional](#)



[Environmental Change](#) journal.

Therein, the authors investigated the underlying methodologies for determining types of farms/farmers, the purposes of developing typologies and whether there are recurring farmer types across contexts and locations.



[Read more](#)

Response of endangered bird species to land-use changes in an agricultural landscape in Germany

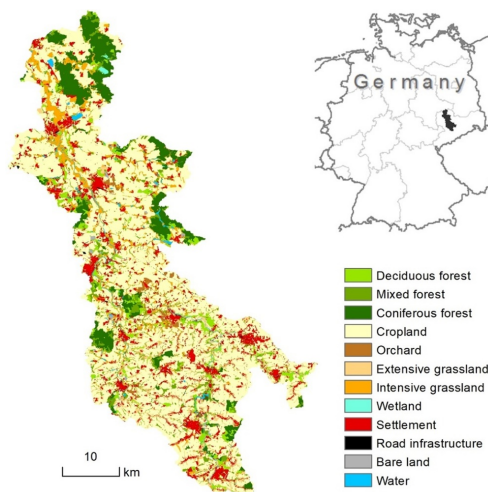


Photo: Land use in the Middle Mulde River Basin in Saxony, Germany, based on the reference year 2010, and location of the study region within Germany



A newly published BESTMAP-supported [article](#) in the [Regional Environmental Change](#) journal, investigates the land-use intensification in agroecosystems that has led to population decline in farmland birds.

The study looks into the impacts of three stakeholder-driven land-use scenarios on the breeding habitat area of 13 regionally endangered bird species in the Middle Mulde River Basin, a rural area in Central Germany.

[Read more](#)

BESTMAP's collection in Research Ideas and Outcomes (RIO)

In this collection

 Papers published: 8
Documents added: 10
Printed version: Paperback


BESTMAP Project Outcomes Sort results by: Publication date newest


Edited by Guy Ziv, Jodi Gunning

The BESTMAP RIO Collection will host key outputs relating to the new modelling framework the project is developing. The projects work focuses on supporting EU policy design and monitoring, by addressing the complexity of decisions made by farmers and the wider impact of agricultural policy on natural, social and cultural assets in rural areas of Europe.

This Collection will continue to be developed further as the BESTMAP project continues to promote a sustainable future for the agriculture sector in Europe.


doi: [10.3897/rie.coll.148](https://doi.org/10.3897/rie.coll.148) [Add document to this collection](#)

Research Article Published in: Regional Environmental Change

 **Typologies of European farmers: approaches, methods and research gaps**

Bartosz Bartkowski, Charlotte Schüller, Birgit Mueller
10.1007/s10113-022-01899-y 14-09-2022 [LINK](#)

Project Report Published in: Arpha Preprints

 **D6.1 Analysis of needs and capacity of different audiences including policy makers, expert practitioners and other modellers**

Milica Trajković, Dajana Vujaklija, Guy Ziv, Arjan Gosal, Jiaqi Ge, Jodi Gunning, Birgit Mueller, Annabelle Williams, Elisabeth Nadeu
10.3897/arpha-preprints.e82715 25-02-2022 [LINK](#)

Unique: 29 | Total: 35

BESTMAP has just started an [open project collection](#) in the Research Ideas and Outcomes (RIO) journal in order to raise the project's visibility and improve the dissemination of all publicly available project outcomes.

The BESTMAP collection in RIO intends to widen the accessibility and openness of project findings by publishing not just regular scientific articles, but also additional materials that cover the complete research cycle. Reports, protocols, techniques, research and other project outputs will be included in the collection. The collection also provides links to BESTMAP publications in other journals.

[Read more](#)

BESTMAP at the EU Conference on modelling for policy support



2021 EU Conference on modelling for policy support
22 - 26 November - *online event*

Between 22 to 26 November 2021 BESTMAP took part in the [2021 EU Conference on modelling for policy support](#), organised by the European Commission's [Competence Centre on Modelling](#) (CC-MOD). Aiming to create connections between researchers and stakeholders from civil society, government, and the private sector, and bridge science and decision-making for sustainable management and governance of land use worldwide, the project presented agricultural policy behavioural, ecological and socio-economic modelling from case studies to European scale.

[Read more](#)

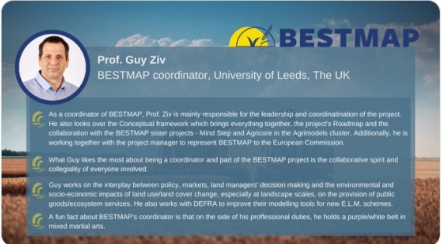
Social Media campaigns

#BESTMAPfaces

#BESTMAPfaces presents the leading project members and their role in BESTMAP.

BESTMAP
@Bestmap_EU

In this week's **#BESTMAPfaces** feature we want you to meet the BESTMAP coordinator - Prof. Guy Ziv from the **@UniversityLeeds**! 🇬🇧
Did you know that he is also a martial arts pro? No? Well, you can read part of his exciting portfolio in our feature card below!




University of Leeds and 8 others
1:04 PM · Dec 21, 2021 · Twitter Web App

View Tweet analytics

1 Retweet 4 Likes

BESTMAP
@Bestmap_EU

We are eager to introduce to you another inspiring member of the **#BESTMAPfaces** - Dajana Vujaklija! Being a project manager at the **@BioSenseRS**, Dajana is also a leader of the BESTMAP **#capacitybuilding** and **#dissemination** team! 🧑🏻‍🔬👤



BioSense Institute and 7 others
2:10 PM · Dec 10, 2021 · Twitter Web App

View Tweet analytics


2 Retweets 6 Likes

#BESTMAP_ECR

This campaign gives special attention to all PhD and postdoc researchers in BESTMAP and provides insight into their research interests and progress.

BESTMAP
@Bestmap_EU

We continue our **#BESTMAP_ECR** feature and this week we are thrilled to introduce you to Miljana Marković! Member of the **@BioSenseRS**, Miljana is a BESTMAP **#PhD** in **#geosciences**! She is proud of being part of the project and we are glad to have her on board! bit.ly/3qfE07t



CREAF and 9 others
10:22 AM · Mar 10, 2022 · Twitter Web App

View Tweet analytics

1 Retweet 4 Likes

BESTMAP
@Bestmap_EU

Did you know that BESTMAP has a **#PhDprogramme**? We are glad to share our latest campaign that will showcase the **#BESTMAP_ECR** research and the outstanding faces behind it! Meet Stafanija Stojkovic through our focused interview with her! Full interview: bestmap.eu/insider



BioSense Institute and 6 others
5:56 PM · Feb 16, 2022 · Twitter Web App

View Tweet analytics

4 Retweets 15 Likes

You can find more in-depth interviews with our early-career researchers in the Insider section of our website.

Discrete choice experiment

During February and March 2022, the team conducted an online survey designed as a discrete choice experiment. The survey was distributed amongst farmers in our five case studies and looked at how farmers make decisions on whether or not to adopt agri-environmental schemes. The data we gathered via this survey is still being analysed and will act as input to our agent-based model later this year.



Co-design sessions

During March and April 2022, our five case studies held co-design sessions with their regional and national stakeholders. The focus of these sessions was to discuss how our modelling results can best support policy decisions and how the interactive dashboard we are working on can help to utilise our results. Thanks to the participation of our stakeholders the team gained useful insights which will help to guide the later stages of our work. A further co-design session with policy-makers at EU level is being planned for later this year.

News from the AGRIMODELS Cluster

The AGRIMODELS Cluster brings together EU experts



On 12 and 13 May BESTMAP hosted the Agrimodels cluster and other external experts in Basel, Switzerland for a one-day hybrid workshop.

The event was hosted by the BESTMAP partners from the [University of Basel](#) to discuss the linking of agent-based models (ABM) with computational general equilibrium (CGE) or partial equilibrium (PE) models.

[Read more](#)

The AGRIMODELS Cluster meets in Brussels

AGRIMODELS Cluster and DG AGRI joint workshop

23 May 2022, Brussels, Belgium

 **BESTMAP**

 **agricore**

 **MIND
STEP**

On 23 May 2022, the three sister projects BESTMAP, MIND STEP and AGRICORE that form the Agrimodels Cluster, gathered for a joint meeting with the DG AGRI in Brussels, Belgium.

The purpose of the gathering was to update the DG AGRI representatives on the current results of each member of the cluster, as well as to discuss common synergies, challenges and potential collaborations.

[Read more](#)



You can find more in-depth information about everything new happening around our sister projects from the AGRIMODELS Cluster on our website.

[Read more](#)



3rd General Assembly



3rd Annual General Assembly

13 - 14 September 2022, Palacký University Olomouc, Czech Republic

Hybrid event



On 13 and 14 September 2022, BESTMAP's third General Assembly (GA) meeting will take place. Hosted by the BESTMAP partners at the Palacký University Olomouc, Czech Republic, the GA will gather members from all the BESTMAP partner institutions. This year's #BESTMAP_GA will be organised in a hybrid format.

Representatives from all partnering institutions will gather to

discuss the current achievements of the project, as well as potential challenges and opportunities for the final stage of the project.



Summer School

Modelling policy impacts on ecosystem services and biodiversity

12-16 September 2022, Olomouc, Czech Republic

Between 12 and 16 September 2022, a Summer School on the modeling of agriculture policy's impacts on ecosystem services and biodiversity will be held in Olomouc, Czech Republic. Check our website for updates.

[Click here](#)

More coming up

- We have had two abstracts accepted for IALE International Association for Landscape Ecology 11-15 July 2022 which will take place online.
- Our biophysical and ecosystem services modelling work will conclude in early summer.

#FollowUs on Twitter.

@Bestmap_EU

[Follow](#)



This email was sent to {{contact.EMAIL}}
You've received it because you've subscribed to our newsletter.

[Unsubscribe](#)

